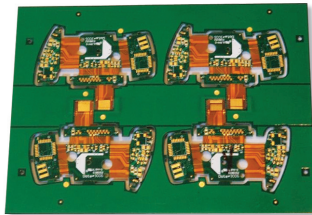




INTERNATIONAL ADVANTAGE

ENHANCED PROFITABILITY THROUGH IMPROVED SOURCES OF SUPPLY

PCB BARE BOARD FABRICATION



- Production and Prototype
- Small and Large Quantities
- Quick Turns Available
- Multiple Layer (1 to 24)
- Flex
- Rigid Flex (1 to 10 layer)
- Metal Clad (1 to 4 layer)
- Ceramic
- SMT Stencil fabrication (Laser cut, Aluminum Frames)

PCB Bare Board Fabrication

Base Material	FR4, TG(170 C), CEM-1, CEM-3
Copper	1oz—4oz
Max Panel Area	20"x30" (1-2 layer) 20"x26" (Multilayer)
Surface Treatment	HASL/Lead Free HASL; Immersion Gold, Silver, Tin; O.S.P.; Soft Gold; Carbon
Solder Mask Color	Green, White, Red, Black, Yellow, Blue

PLASTICS



- Injection Mold making
- Injection Molding
 - *Single Shot*
 - *Insert Molding*
 - *True Double Shot*
- Formed in Color Graphics
- Metal Film Overlays
- Injection Blow Molding
- Extrusions
- Painting and Printing
- Prototypes

Plastic Technology

- 80-2400 Ton Single Injection Molding Machines
- 150-300 Ton Double Injection Molding Machines
- Materials: PC, ABS, Graphite Fiber ABS, Acrylic, TPE, TPR, PP, PE, PET, LDPE, Silicon,
- CNC Milling machines to 9 meter table
- EDM Machines
- Wire Cutting Machines
- Pad Printing
- Silkscreen Printing
- Hot Stamping
- Spray Painting
- Metal Film Overlay

INTERNATIONAL ADVANTAGE

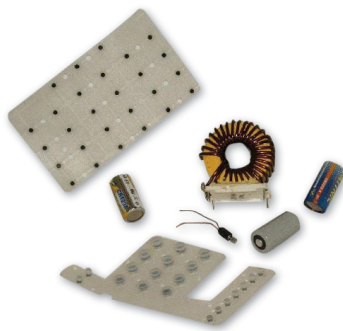
ENHANCED PROFITABILITY THROUGH IMPROVED SOURCES OF SUPPLY



- **CNC Machining**
- **CNC punching/Laser Cutting**
- **Punching/Stamping**
- **Deep Draw**
- **Extrusion**
- **Casting**
- **Welding**
- **Sheet Metal Fabrication**
- **Painting/Printing/Powder Coating**

Metals

- Heat sinks, machined parts, electronic shields, metal cabinets, extruded housings, cylinders (compressors), valve bodies, etc.
- CNC Laser Cutting
- CNC Multi Axis Milling
- CNC Turret Lathes
- CNC Punching
- 88 Ton-500 Ton Die Casting Machines
- Anodizing—Regular, Hard coat, colors



- **Coils / Windings / Motors / Chokes**
- **Transformers / Filters (EMI, RFI)**
- **Wire/Cable assembly**
- **Batteries**
- **Key Pad Membranes**
- **LCD Displays**
- **Labels**

Miscellaneous

- Transformers: Switching, audio coupling, power convertor, toroidal, pot cores, etc.
- SMD: Transformers, Filters, Chokes
- Motors: small 1V to large 240V
- LCD: Custom and standard, monochrome and color
- Silicone membranes and formed membrane overlays
- Batteries: